

A man in a white tank top and dark pants is balancing on a tightrope. Below him, a group of seven people are holding the rope from both sides, supporting it. The scene is lit with dramatic red and blue lights against a dark background. The text "ONE FELL SWOOP PRESENTS" is centered above the main title "BY A THREAD" in white, bold, sans-serif font.

ONE FELL SWOOP PRESENTS  
**BY A THREAD**

NICHOLAS CLARK MANAGEMENT

# BY A THREAD

## SEVEN ACROBATS AND 30 METRES OF ROPE

Long spools of white rope run through pulley sheaves and wrap around bodies, explicitly connecting the artists' movements above and off the ground. Like the booms and sheets of a sailing ship the performers are hoisted and swung by one another to create striking tableaux and breathtaking dynamics. The actions of one acrobat affect and implicate the movements of others in a mesmerising negotiation of cause and effect.

By A Thread offers rich visuals of inventive aerial acrobatics from some of Australia's best circus artists. The relationships between ensemble members on stage mimic the everyday relationships we have as human beings. The acrobatic ensemble is the vehicle through which ideas of risk and trust are explored, creating an intimate audience experience around the dangers and joys implicit in engaging with others.

More than mere bodies in space, By A Thread is an exploration of tensions physical, emotional and relational.





“AN INTRICATE AND MESMERISING PIECE OF ART”

★★★★☆ ARTSHUB

发微博带话题  
5.24去影院看五月天#  
在官微等着你  
关注  
五月天人生无限公司  
官方微博

演 唱

# THE CAST

**Directors:** Charice Rust & Jonathan Morgan  
**Dramaturg:** Zebastian Hunter  
**Lighting Design:** After Dark Theatre  
**Costume Design:** Emily Barrie & Stephanie Neoh  
**Sound Design:** Lee Stout

## Original Creation:

Ela Bartilomo, Sarah Berrell, Emily Chilvers, Ryan Darwin, Amanda Lee, Jonathan Morgan, Hamish Norris, Jordan O'Brien and Charice Rust.



**Charice  
Rust**



**Jonathan  
Morgan**



**Sarah  
Gray**



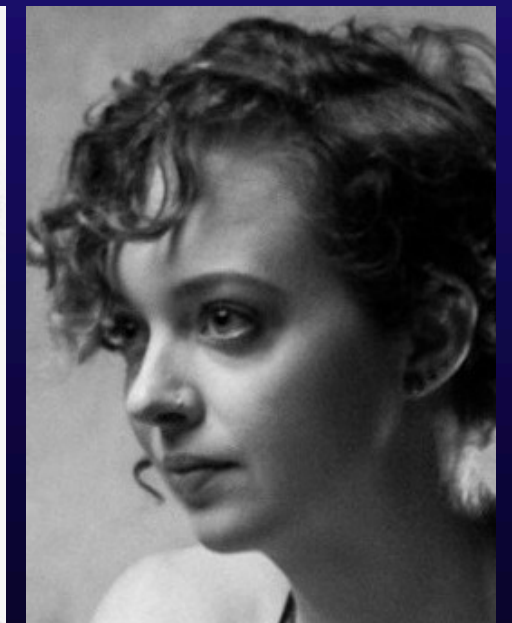
**Claire  
Bindoff**



**Latonya  
Wigginton**



**Easa  
Min-Swe**



**Ellen  
Grow**



The Advertiser



This is Radelaide



The Arts Hub



The West  
Australian



The Clotheline



HIFI Way



The Music



Australian Arts  
Review



# TOURING HIGHLIGHTS

**2021 – 2023**

National Australian Tour Regional Cities, AUSTRALIA – continued

**2021**

Castlemaine State Festival, AUSTRALIA

Geelong Arts Centre Summer Sessions Festival, AUSTRALIA

**2020**

National Australian Tour Regional Cities, AUSTRALIA

Adelaide Fringe Festival, AUS

**2019**

Xintiandi Arts Festival, Shanghai CHINA

Regional Victorian Tour 10 regional cities, AUSTRALIA

IPAY, Philadelphia UNITED STATES OF AMERICA

**2018**

Hawkes Bay Arts Festival, NEW ZEALAND

Adelaide Fringe Festival, AUSTRALIA

Perth Fringe World Festival, AUSTRALIA

**2017**

CIRCa Festival, Auch FRANCE

Gasworks Arts Park, Melbourne AUSTRALIA

**NICHOLAS CLARK MANAGEMENT // 2024**





# REVIEWS

“A beautifully choreographed exploration of tension — physical, emotional and relational — that weaved and soared through a wide spectrum of contexts and tones.”

The West Australian

“The whole event is like a visual symphony, a kinetic piece of art”

The Barefoot Review

“It’s a bonnie, wee show, full of spectacle and heart. It reaffirms the idea that any rewarding endeavour between two or more people – whether romantic, in friendship, or acrobatic – begins and ends with true eye contact. Beautiful.”

The Australian Arts Review

“The risks they took were in the stunts, as well as in their storytelling.”

Australian Arts Review

“Damn brilliant show”

The Music.com

“One Fell Swoop troop push the limits of their craft and deliver a spellbinding and mesmerising show that is a sheer delight to watch”

The Advertiser

“A group of exceptional humans pushing the limits of their art”

The West Australian

# ONE FELL SWOOP

One Fell Swoop uncover the intrinsic metaphor within circus to create stark yet beautiful audience experiences. Based in Melbourne, the company combines ambitious concepts with visceral physicality, bringing audiences the invigorating mix of joy and risk inherent to group acrobatics.

One Fell Swoop creates work that combines a high level of circus skill with rich dramatic perspectives, specialising in traditional theatre shows and large-scale outdoor circus installation works. The company brings the dynamics of acrobatic ensemble work and the relationships within it to circus performance structures.

Recent performance highlights include Xintiandi Festival in Shanghai, IPAY in Philadelphia, festivals in New Zealand and France, as well as regional touring throughout Australia.

One Fell Swoop connects a highly skilled ensemble with innovative apparatus, where classic techniques are used in expansive ways and new ideas are made possible.

ONE  
FELL  
SWOOP  
C I R C U S







'THIS IS A WORK OF ART  
IF I COULD GIVE  
IT SIX STARS  
I WOULD'



THE ADVERTISER



# BY A THREAD

## TECHNICAL SPECIFICATIONS

PAGE 1/2

<b>Audience:</b>	General Public – All Ages
<b>Content Rating:</b>	G
<b>Duration:</b>	50 Minutes
<b>Touring Party:</b>	7 Performers + 1 Technician
<b>Formats:</b>	Proscenium Arch, Outside, Studio & Hall
<b>Bump In:</b>	Min 4 hrs based on pre-rig of lighting & rigging
<b>Bump Out:</b>	1.5 hrs
<b>Dressing Room:</b>	Dressing room with mirror.
<b>Rider:</b>	Where tech and/or show times cover a meal please include vegetarian options & tap water

## EQUIPMENT

Supplied by the show:  
30m X 32mm three-ply pure cotton rope  
2 X large diameter pulleys  
6 X 1.8m roll-out acrobatic flooring or equivalent

## STAGE DIMENSIONS

Minimum 8m wide by 6m deep  
Minimum height to rigging points 6m

## SOUND

Sound is run through QLab, we can supply a laptop if required.  
Mic set side in OP wing for pre-show announcement.  
Unless otherwise specified the venue will provide an operator.

## LIGHTING

Please see separate plan.  
Unless otherwise specified the venue will provide an operator.

## FREIGHT

Gross show weight: 140kg  
Flys in: 1x 23kg Oversize bag – 1.9m long, 1x 30kg and 4x23kg  
check-in bags.

## RIGGING

We hang two large diameter pulleys from two rigging points that need:

300kg Safe Working Load each

Static hung at between 6–10m from stage level, visible to audience. If the roof is higher than 10m we require a truss that is guyed to be stationary. If you have large beams in your roof but aren't sure please get in touch and we can usually make something work.

3.5m to 4m separation sharing centre. The space between the pulleys needs to be clear of fixtures for our rope to run through.

The pulleys need to be accessed in the pre-set of each performance to thread the rope. This can be with an EWP, we can rig a rope system so the pulleys can be lowered in and out, or with direct climbing access to the points.

We also use a floor tie-off point in the OP wing level with the rigging points. This can be a point in the theatre structure, we also commonly use an EWP as ballast. Minimum SWL of 200kg.

- Please see sample stage plan and rigging diagram below
- Show tours with their own in-house rigger

# BY A THREAD

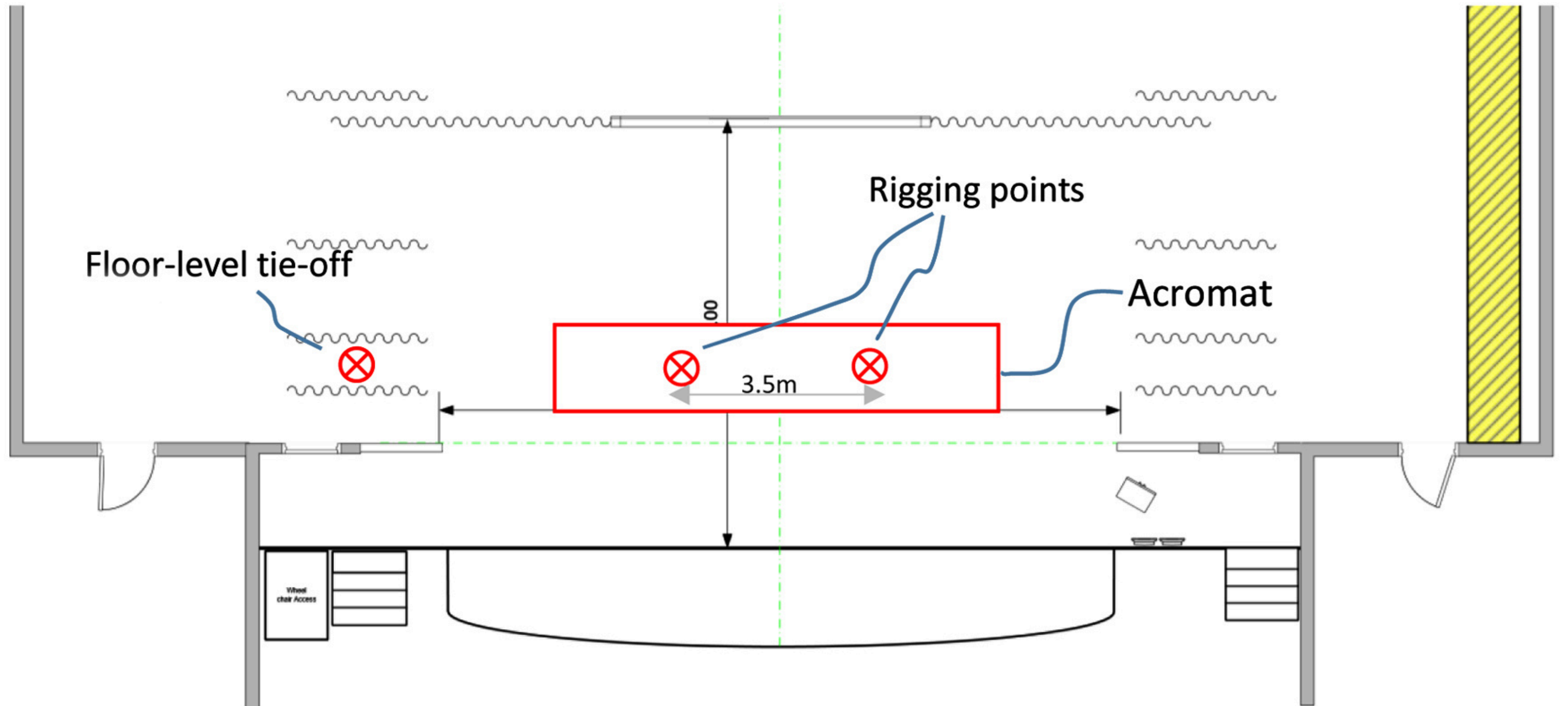
## TECHNICAL SPECIFICATIONS

PAGE 2/2

### Example Show Schedule:

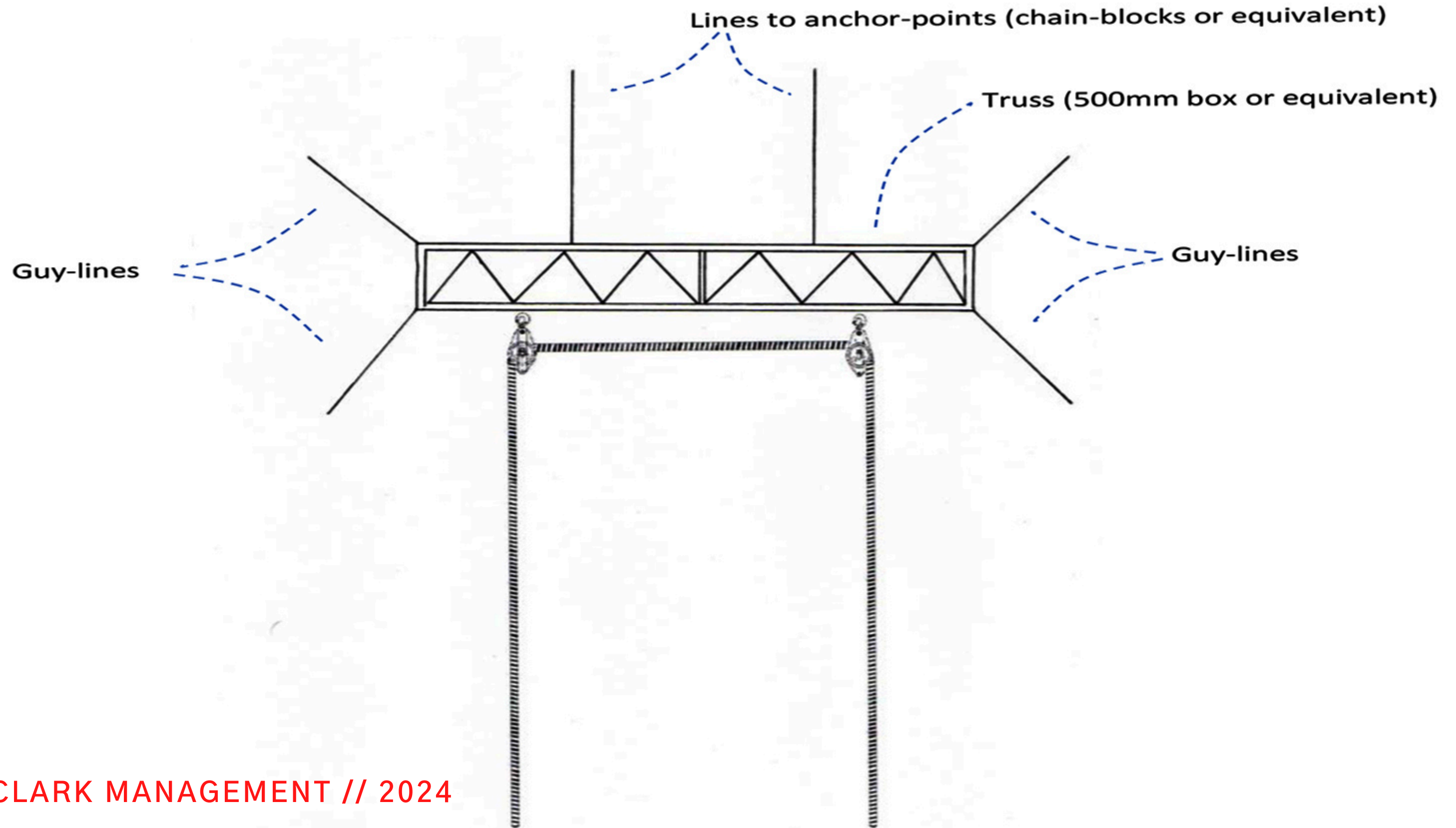
12pm	Arrive at venue & Bump In
2 – 6 pm	Tech (30 mins check rigging, 2 hrs LX check, 1 1/2 hrs sound check + acrobatic safety checks)
6 – 6:30pm	Break
6:30 – 7:30pm	Warm Up
7:30pm	30min Show Call
8:00 – 9:00pm	Show
9:00 – 10:30pm	Bump Out

# BY A THREAD SAMPLE STAGE PLOT



# BY A THREAD

## APPARATUS RIGGING SKETCH





“A carefully orchestrated and stunningly nuanced dance that, with absolute fluidity, takes you through the full range of human emotions”

The Advertiser

“A visual feast of amazing aerialist acrobatics performed within a contemporary circus stage and set to some vibrant musical scores”

Perth Walkabout





# CREATIVE INSIGHTS

JONATHAN MORGAN & CHARICE RUST

Circus, by the nature of the physicality and risk present in the art-form, necessarily develops high levels of trust and communication within ensembles. By A Thread was created to bring a new dimension to how an audience can understand these ‘acrobatic’ relationships, and the parallels they draw to our everyday interactions.

The relationships between ensemble members on stage mimic the everyday relationships we have as human beings. The acrobatic ensemble is the vehicle through which ideas of play, risk, and trust are explored, creating an intimate audience experience around the dangers and joys implicit in engaging with others.

The apparatus at the heart of By A Thread – 30 metres of rope that extends from the floor, through two pulleys three metres apart, and back to the floor – is the centrepiece of the exploration, and this stark representation of the relationships between ensemble members offers a distinctly intimate experience.

## CREATIVE INSIGHTS CONTINUED

Each time a performer climbs or hangs from the rope the rest of the ensemble must provide a counterbalancing force on the other end. The tension and force that usually disappears into the rigging is thrown into full view in the hands and muscles of the supporting ensemble members. This physical manifestation of complicité offers a unique insight into the workings of an ensemble and the risk intrinsic to acrobatics.

The counterpoint to the danger in circus is the joy that is integral to working as an ensemble, the joy of challenging the risk, and uncovering something else. The performers explore confusion, hilarity, romance, playfulness, fear and friendship, and plunge the audience into these possibilities at the intersection of joy and risk. More than mere bodies in space, *By A Thread* is an exploration of tensions physical, emotional and relational.





# GRAB HOLD OF 'BY A THREAD' TODAY!

FIND OUT WHEN 'BY A THREAD' IS AVAILABLE  
FOR TOURING IN YOUR AREA

## CONTACTS

Darcy Van Dillen  
Agent  
darcy@nicholasclarkmanagement.com  
+61 499 101 401

[www.nicholasclarkmanagement.com](http://www.nicholasclarkmanagement.com)  
[www.facebook.com/nicclarkmanagement](http://www.facebook.com/nicclarkmanagement)  
[www.instagram.com/ncmanagement](http://www.instagram.com/ncmanagement)



# NCM

